

# Park Row

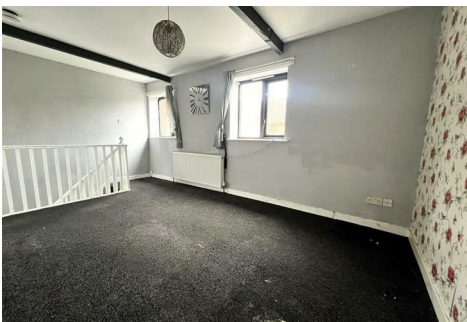


**Corunna Court, Ousegate, Selby, YO8 4PZ**

**Offers Over £100,000**



**\*\* NO UPWARD CHAIN \*\* IDEAL FOR INVESTMENT \*\*** Situated in Selby town centre, this mi-terrace cottage briefly comprises: Hall, Bedroom and Bathroom. To the First Floor: Living Area and Kitchen. **VIEWING IS HIGHLY RECOMMENDED TO FULLY APPRECIATE THE STYLE OF THE PROPERTY ON OFFER. RING US 7 DAYS TO BOOK A VIEWING. 'WE OPEN UNTIL 8PM MONDAY TO THURSDAY, 5.30 FRIDAYS, 5.00 SATURDAYS AND 11.00 - 3.00 SUNDAYS'.**





## GROUND FLOOR ACCOMMODATION

### Entrance

Hardwood timber door with top section having double glazed panel leading into:

### Hall

14'2" x 5'6" (4.32m x 1.70m)

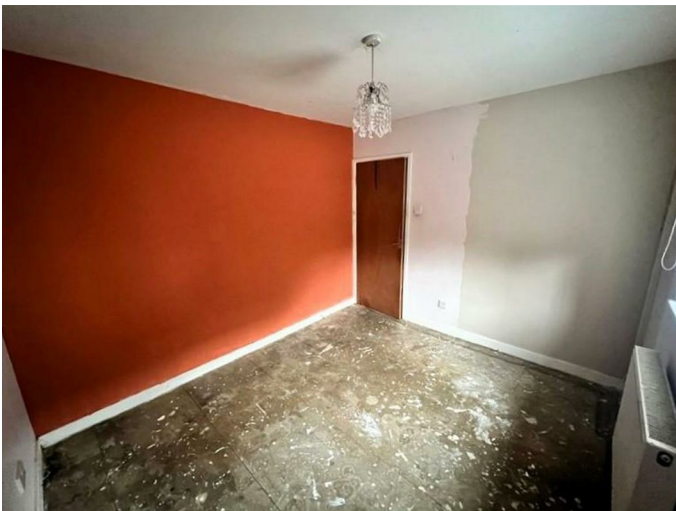
Central heating radiator and tiled effect flooring. Stairs with balustrade and spindles, leading to First Floor accommodation. Under-stairs storage cupboard housing the electric heating system. Doors leading off.

### Bedroom

10'10" x 9'5" (3.32m x 2.89m)



Timber framed double glazed window to the front elevation and central heating radiator.



### Bathroom

10'10" x 5'9" (3.31m x 1.76m)

White bath with chrome taps over and a tiled splash back.

White low flush w.c with chrome fittings. White pedestal wash hand basin with chrome taps over and tiled splash back. Extractor fan, wall mounted electric heater and central heating radiator.

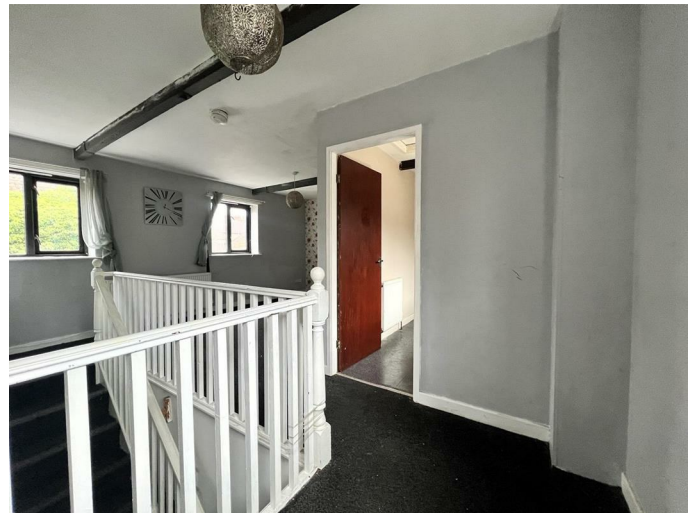
## FIRST FLOOR ACCOMMODATION

### Lounge

16'11" x 16'7" (5.17m x 5.07m)



Timber framed double glazed windows to the front elevation. Central heating radiator, television and telephone point. Feature beams to ceiling and further balustrade and spindles. Timber framed double glazed window to the rear elevation and door into:







**Kitchen**  
10'5" x 6'2" (3.19m x 1.90m)



Range of base and wall units, white fronted with brushed chrome 'T-bar' handles. Single bowl and stainless steel drainer with chrome taps over set into granite effect work surface with brick tiled splash back. Plumbing for washing machine, extractor fan and electric cooker point. Timber framed double glazed window to the rear elevation and central heating radiator. Loft access.



**EXTERIOR: Front**



Outside light. Communal courtyard area.



## Directions

Leave our Selby office and proceed down Finkle Street towards Micklegate. At the end of Micklegate turn right on to Water Hill Lane. To access the property you go through an archway at the right hand side of 'Swat Security'.

## TENURE, LOCAL AUTHORITY AND TAX BANDING

Tenure: Freehold

Local Authority: North Yorkshire Council

Tax Banding: A

Please note: The Tenure, Local Authority and Tax Banding for the property have been advised by the Vendor or obtained from online sources. We strive to ensure these details are accurate and reliable, however, we advise any potential buyer to carry out their own enquiries before proceeding.

## UTILITIES, BROADBAND AND MOBILE COVERAGE

Electricity: Mains

Sewerage: Mains

Water: Mains

Broadband: Ultrafast

Mobile: 4G

Please note: The Utilities, Broadband and Mobile Coverage for the property have been advised by the Vendor or obtained from online sources. We strive to ensure these details are accurate and reliable, however, we advise any potential buyer to carry out their own enquiries before proceeding.

## HEATING & APPLIANCES

The heating system and any appliances (including Burglar Alarms where fitted) mentioned in this brochure have not been tested by Park Row Properties. If you are interested in purchasing the property we advise that you have all services and appliances tested before entering a legal commitment to purchase.

## MAKING AN OFFER

In order to comply with the Estate Agents (Undesirable Practises) Order 1991, Park Row Properties are required to verify "the status of any prospective purchaser... This includes the financial standing of that purchaser and his ability to exchange contracts". To allow us to comply with this order and before recommending acceptance of any offers, and subsequently making the property 'SOLD' each prospective purchaser will be required to demonstrate to 'Park Row Properties' that they are financially able to proceed with the purchase of the property.

We provide truly Independent Mortgage Advice. Unlike many companies we are not tied, and more importantly not targeted to any Lender. We have instant on-line access to over 1000 mortgage deals provided by over 100 Lenders ensuring we are unbeatable when identifying and recommending your new mortgage or re-mortgage requirements.

Your home is at risk if you do not keep up repayments on a mortgage or other loan secured on it. Written quotations available on request. Life assurance is usually required. To arrange a no obligation appointment please contact your local office.

## MEASUREMENTS

These approximate room sizes are only intended as general guidance. You must verify the dimensions carefully before ordering carpets or any built-in furniture.

## OPENING HOURS

CALLS ANSWERED :

Mon, Tues, Wed & Thurs - 9.00am to 8.00pm

Friday - 9.00am to 5.30pm

Saturday - 9.00am to 5.00pm

Sunday - 11.00am to 3.00pm

TO CHECK OFFICE OPENING HOURS PLEASE CONTACT THE RELEVANT BRANCHES ON:

GOOLE - 01405 761199

SELBY - 01757 241124

SHERBURN IN ELMET - 01977 681122

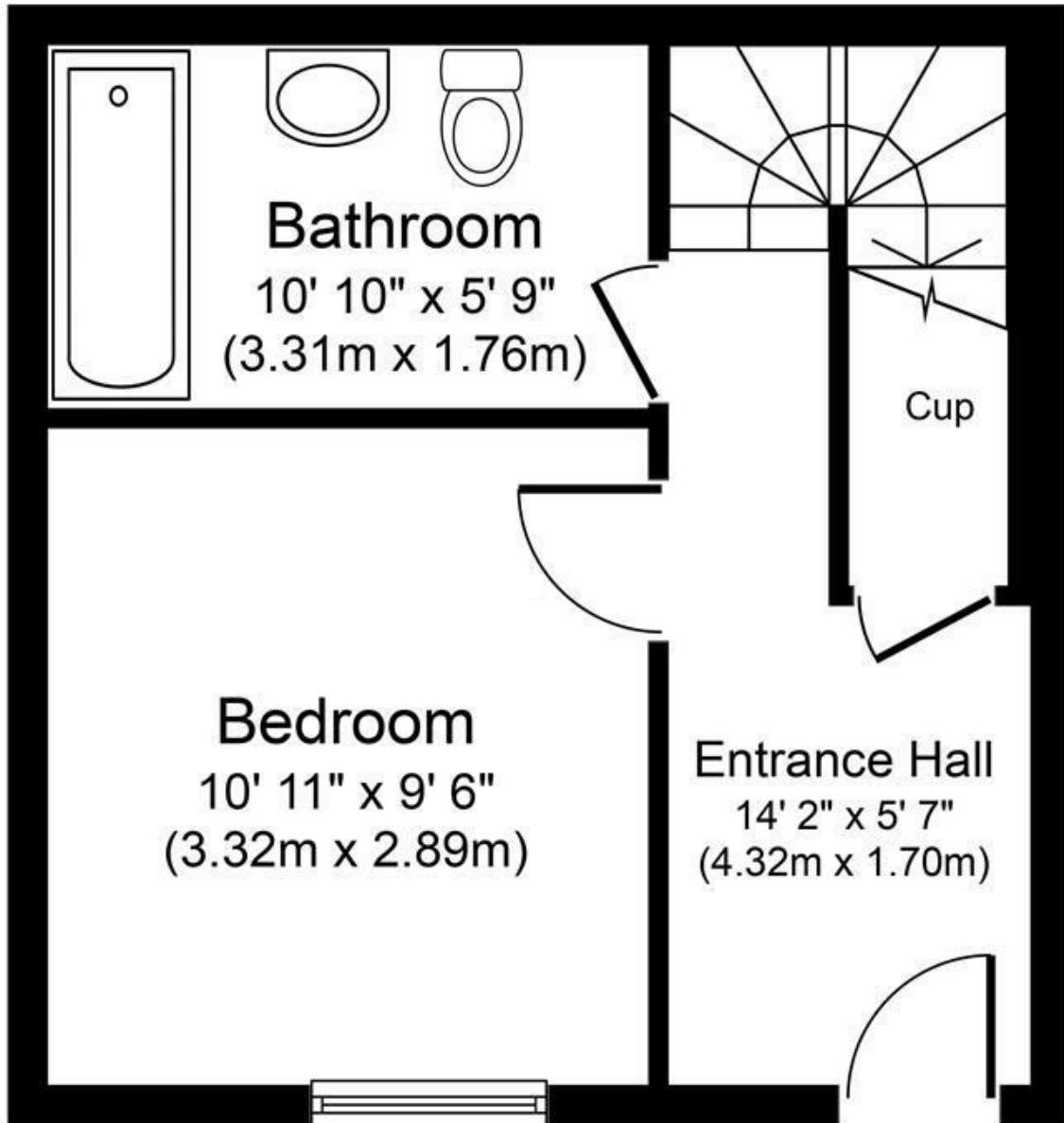
PONTEFRACT - 01977 791133

CASTLEFORD - 01977 558480

## VIEWINGS

Strictly by appointment with the sole agents.

If there is any point of particular importance to you we will be pleased to provide additional information or to make any further enquiries. We will also confirm that the property remains available. This is particularly important if you are travelling some distance to view the property.

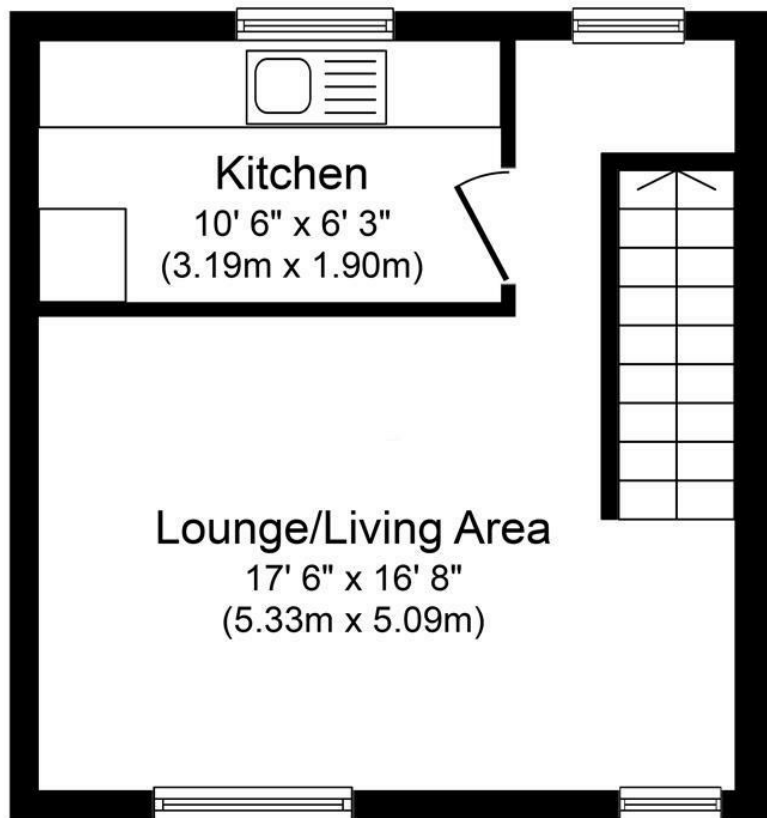


**Ground Floor**  
**Approximate Floor Area**  
**272 sq. ft.**  
**(25.3 sq. m.)**

Whilst every attempt has been made to ensure the accuracy of the floor plan contained here, measurements of doors, windows, rooms and any other items are approximate and no responsibility is taken for any error, omission, or mis-statement. The measurements should not be relied upon for valuation, transaction and/or funding purposes. This plan is for illustrative purposes only and should be used as such by any prospective purchaser or tenant. The services, systems and appliances shown have not been tested and no guarantee as to their operability or efficiency can be given.

Copyright V360 Ltd 2024 | [www.houseviz.com](http://www.houseviz.com)





First Floor  
 Approximate Floor Area  
 272 sq. ft.  
 (25.3 sq. m.)

Whilst every attempt has been made to ensure the accuracy of the floor plan contained here, measurements of doors, windows, rooms and any other items are approximate and no responsibility is taken for any error, omission, or mis-statement. The measurements should not be relied upon for valuation, transaction and/or funding purposes. This plan is for illustrative purposes only and should be used as such by any prospective purchaser or tenant. The services, systems and appliances shown have not been tested and no guarantee as to their operability or efficiency can be given.  
 Copyright V360 Ltd 2024 | www.houseviz.com

T 01757 241124  
 W www.parkrow.co.uk

14 Finkle Street, Selby, North Yorkshire, YO8 4DS  
 selby@parkrow.co.uk

